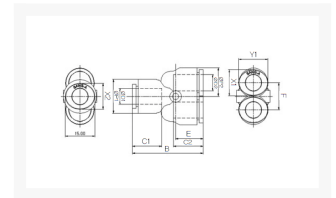


Y- VERLOOP PIF Ø12 - 2xØ10 PPSU

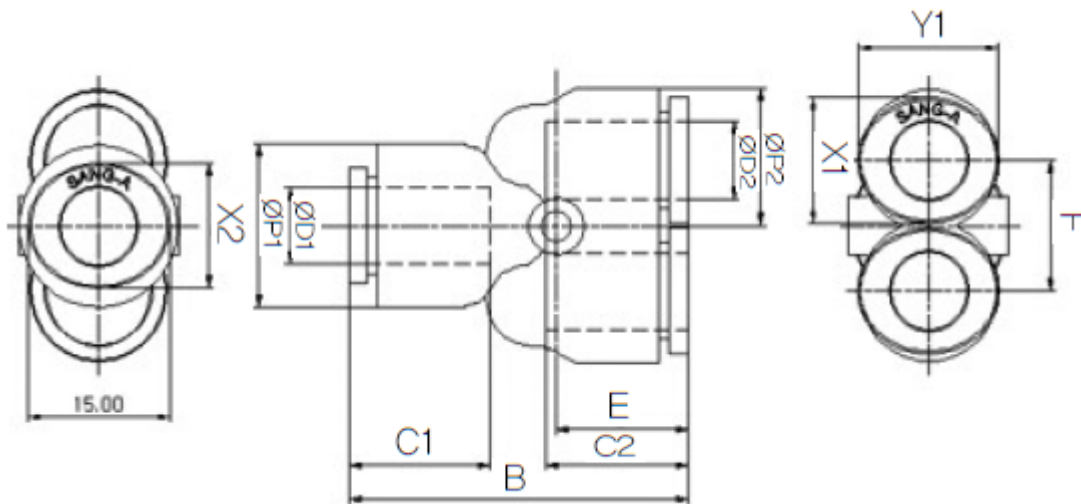
Product Images



Omschrijving

De push-in fitting heeft een PPSU body, de draad is uitgevoerd in RVS316.

Afmetingen



MODEL	ØD1	ØD2	ØP1	ØP2	B	C1	C2	E	F	X1	X2	Y1	Y2
HR-PW 0604	6	4	14.9	11.9	34	15.7	14.9	13.6	11	11	8.6	13	10.8
HR-PW 0806	8	6	16.9	14.9	38.6	17.8	15.7	15	13.6	13	11	15	13
HR-PW 1008	10	8	19.5	16.9	44	19.8	17.8	17.8	15.4	16	13	18.5	15
HR-PW 1210	12	10	23.5	19.5	49.3	22.4	19.8	18.4	17.5	19.5	16	22.5	18.5

Additional Information

EAN Code	8719426564240
Artikelnummer	HRPW12-10
Draadmaat 1	10 mm
Fabrikant	Sang-A
Diameter 1	12mm
Diameter 2	10mm
Materiaal	PPSU