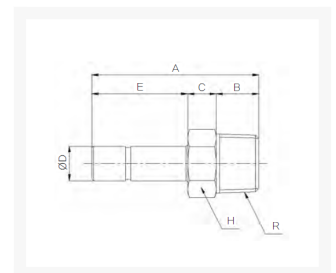
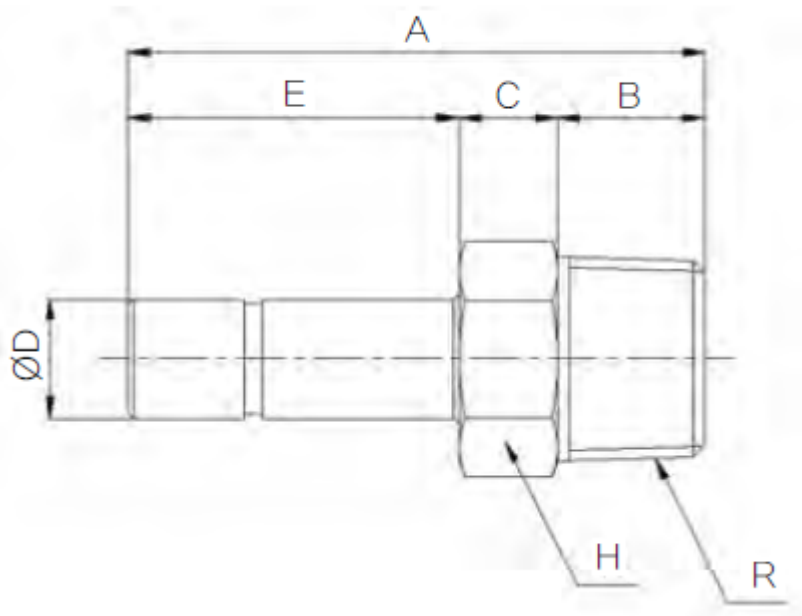


INSCHR-STEELNIPPEL Ø10-G3/8 RVS316

Product Images



Afmetingen



| MODEL | ØD | A | B | C | E | H | R |
|----------------|----|----|-----|---|----|----|-------|
| F-PCJ 04G01 | 4 | 39 | 5.3 | 8 | 18 | 13 | PF1/8 |
| F-PCJ 06G01 | 6 | 44 | 5.3 | 8 | 23 | 13 | PF1/8 |
| F-PCJ 06G02 | 6 | 48 | 6 | 8 | 23 | 17 | PF1/4 |
| F-PCJ 08G01 | 8 | 46 | 5.3 | 8 | 25 | 13 | PF1/8 |
| F-PCJ 08G02 | 8 | 50 | 6 | 8 | 25 | 17 | PF1/4 |
| F-PCJ 10G02 | 10 | 52 | 6 | 8 | 27 | 17 | PF1/4 |
| F-PCJ 10G03 | 10 | 56 | 7 | 8 | 27 | 21 | PF3/8 |
| F-PCJ 12G03 | 12 | 58 | 7 | 8 | 29 | 21 | PF3/8 |
| F-PCJ 12G04 | 12 | 61 | 8.5 | 8 | 29 | 24 | PF1/2 |

Additional Information

| | |
|---------------|---------------|
| EAN Code | 8719426570340 |
| Artikelnummer | FPCJ10-G03 |
| Aansluiting 1 | Buitendraad |
| Merk | Sang-A |
| Fabrikant | Sang-A |
| Materiaal | RVS |
| Steel | 10 mm |
| Diameter | 10mm |
| Draadmaat 1 | 3/8" |
| Draadsoort 1 | BSP |
| Vorm | Recht |